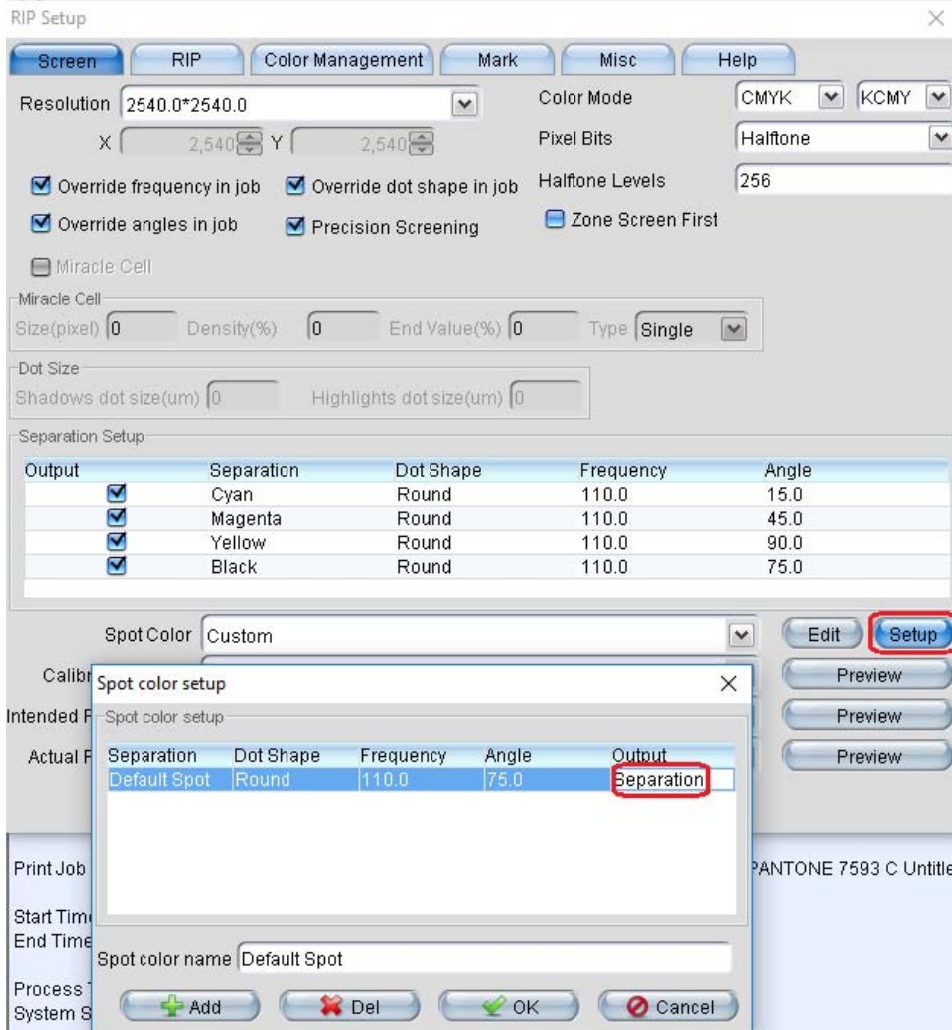
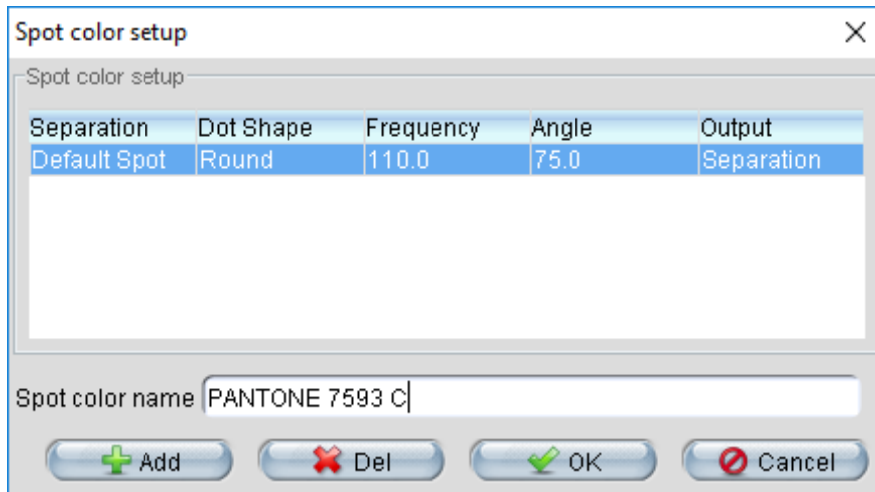


How to setup screening angle for spot colors?

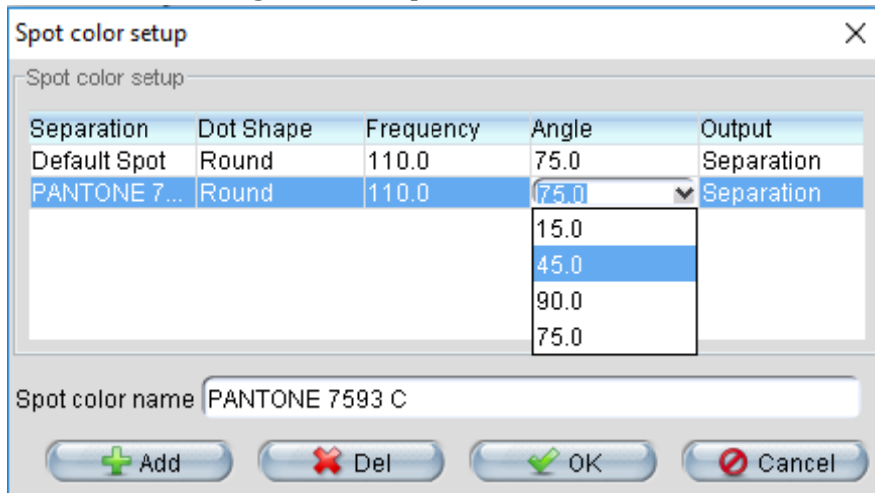
1. Open the job files in Illustrator, and write down the spot color names, be careful the case, space and symbol, etc.
2. Go to RIP setup, click Setup of Spot Color, then select Separation, as following:



3. Input the spot color name, then click Add.



4. Then select the angle for the spot color.



5. Click OK to save it. Then RIP the file.

end