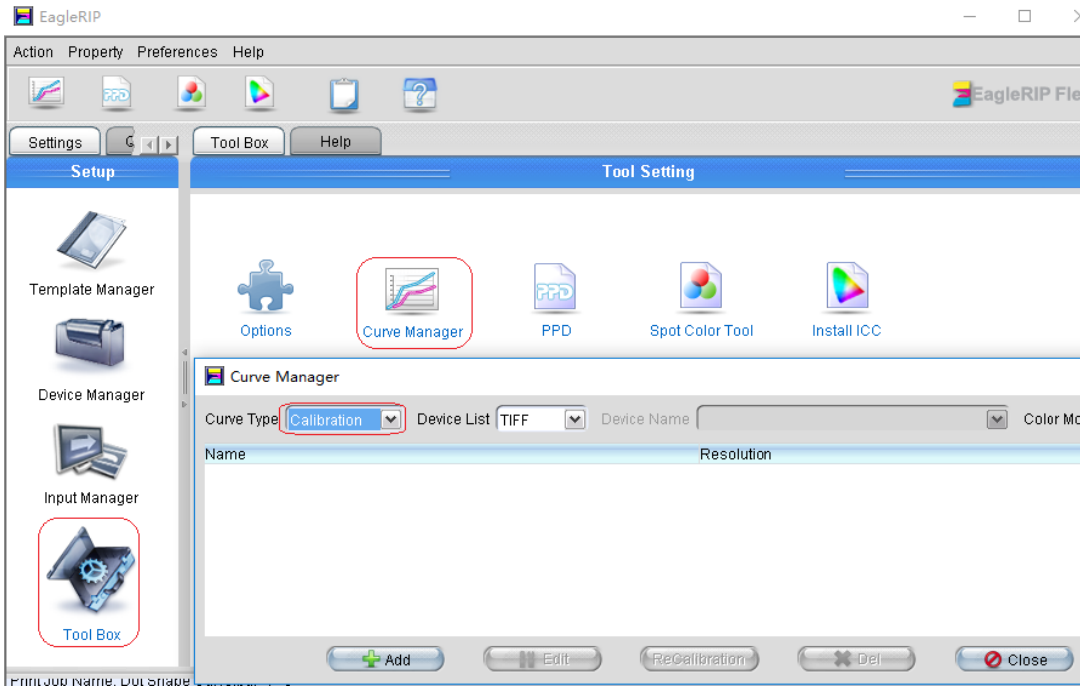


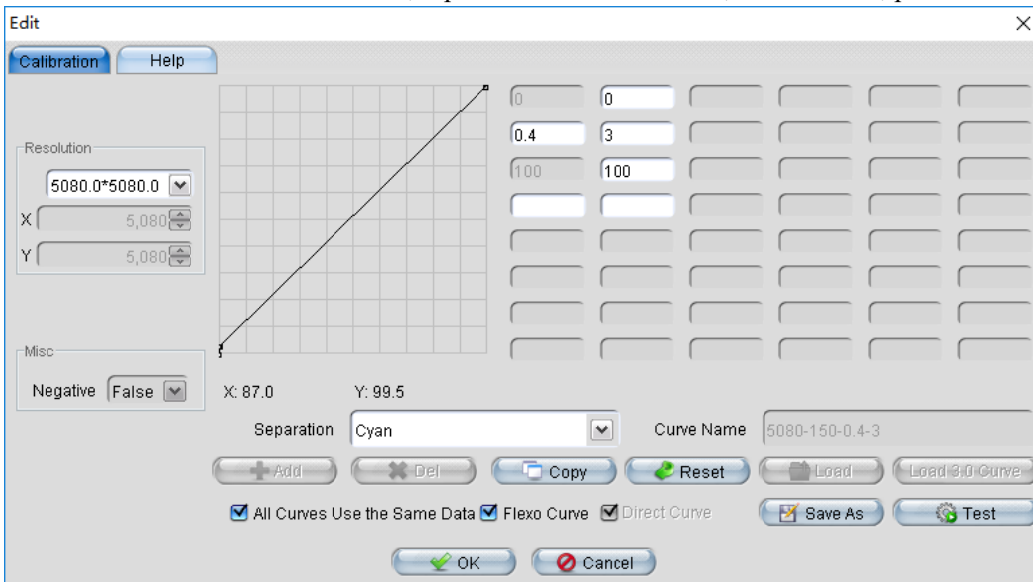
How to edit curves in EagleRIP Flexo

For letterpress printing, sometimes customer only needs compensation on the smallest dots, such as increasing 0.4% to 3%, the curve edition is as following:

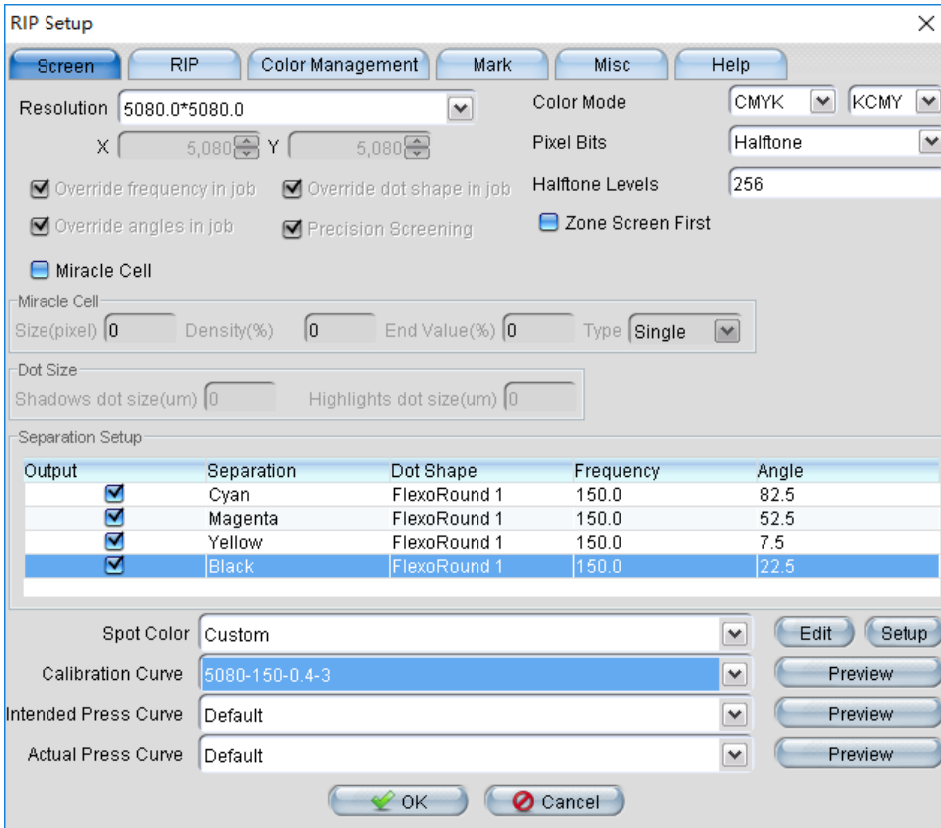
Select Calibration from Curve Type options:



Click Add button to create a new curve, input the curve name and select the right resolution; check the boxes of All Curves Use the Same Data and Flexo Curve; input 0.4 on left blank area, and 3 after it, press Enter to save the group of data.

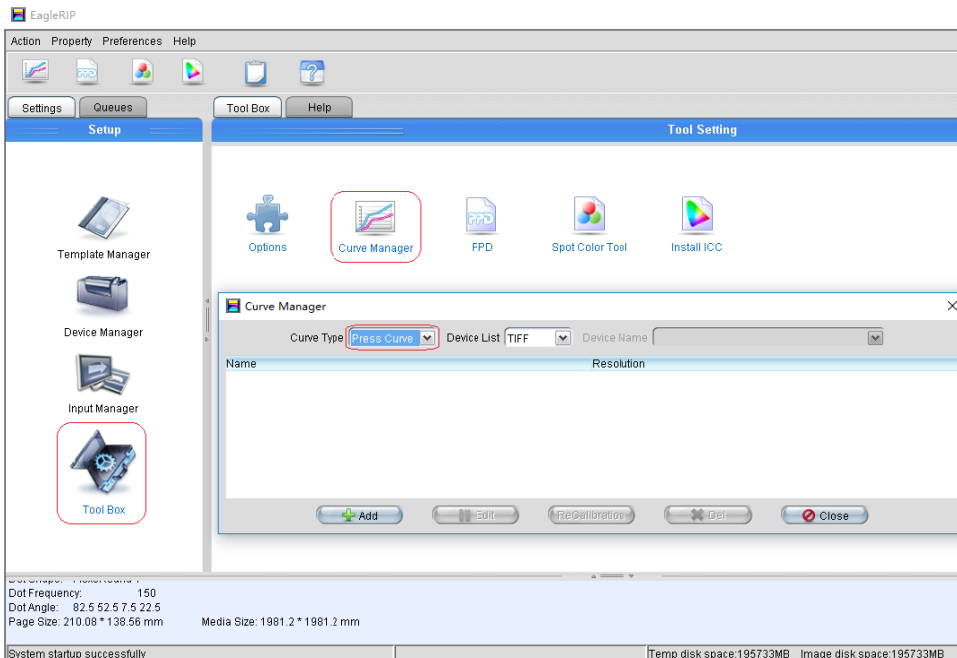


And then use this curve while processing jobs by selecting it from Calibration Curve options, as following:



For flexo printing or letterpress which needs plate calibration curve, please make the curve as following steps:

1. Select Press Curve from Curve Type options on Curve Manager:

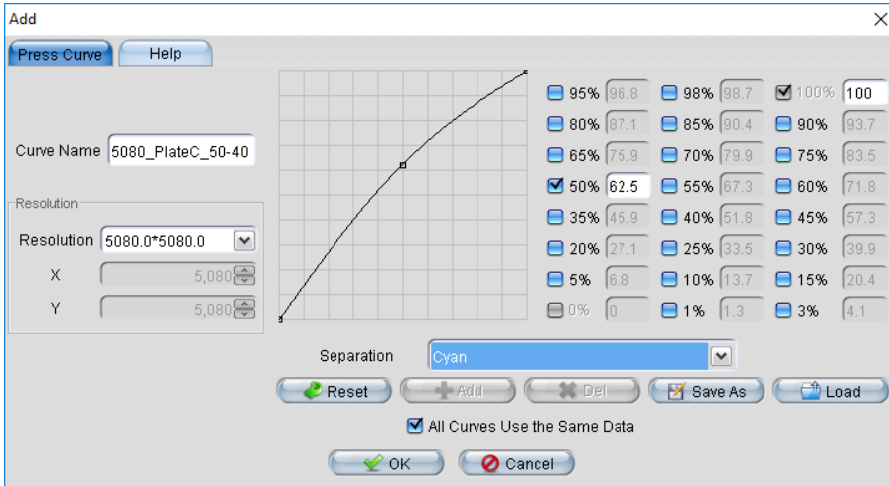


- Click Add button to create a new curve. If the dots on plate were shrank while the plate was washed in machine, such as 50% became into 40%, so the dot size was shrank by $(50-40) / 50 = 20\%$.

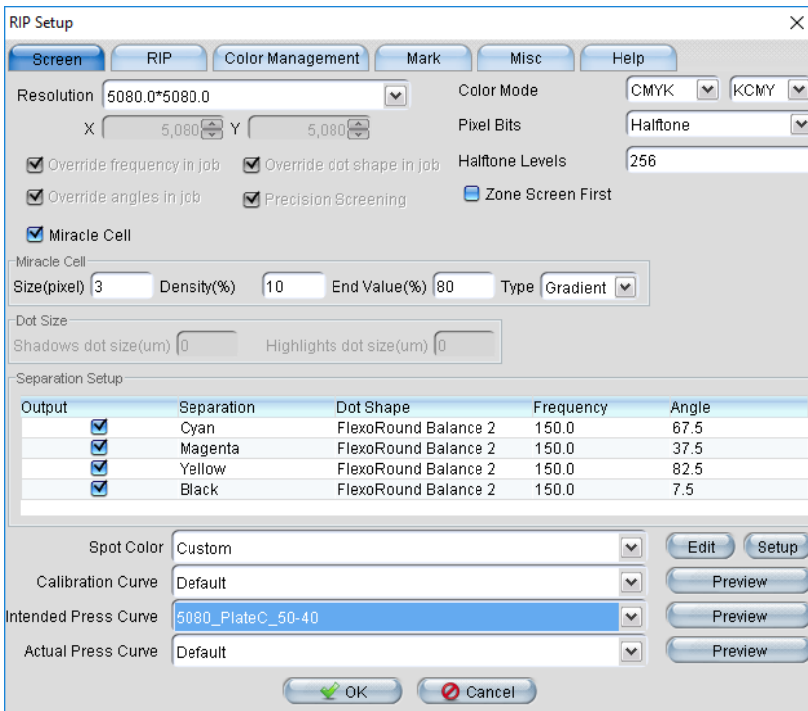
In order to keep 50% dot on plate, the size of 50% before washed should be

$$50 / (1 - 20\%) = 62.5\%$$

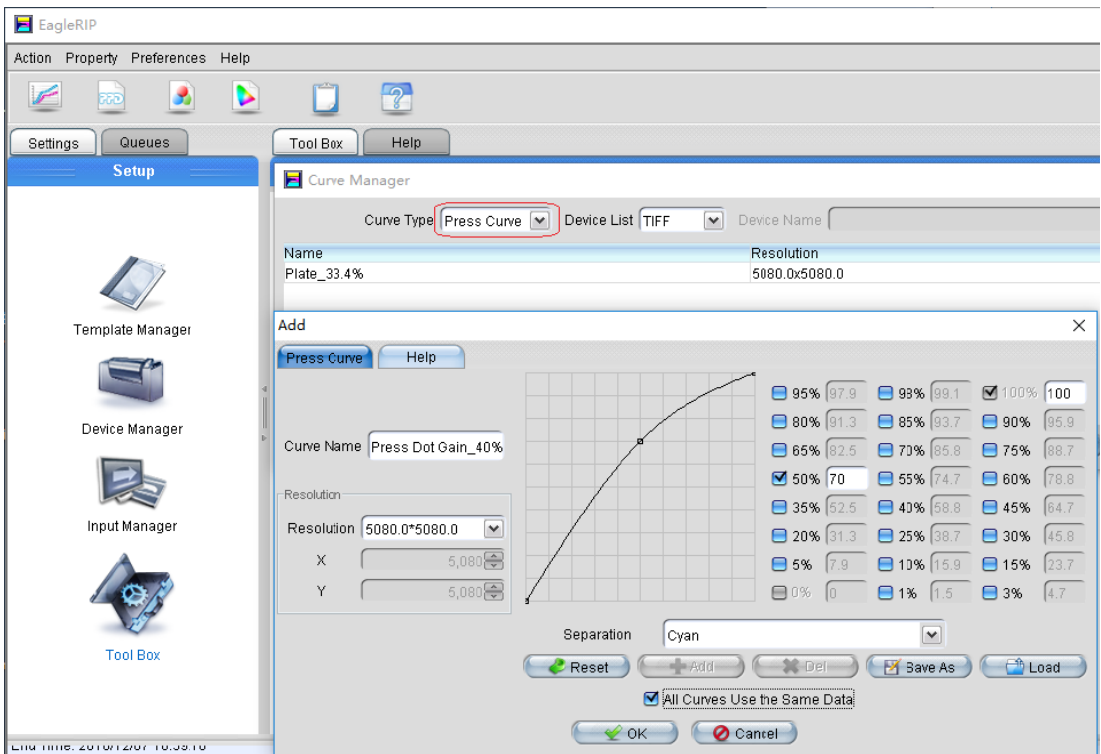
and now we input 62.5 on the blank area of 50% as following:



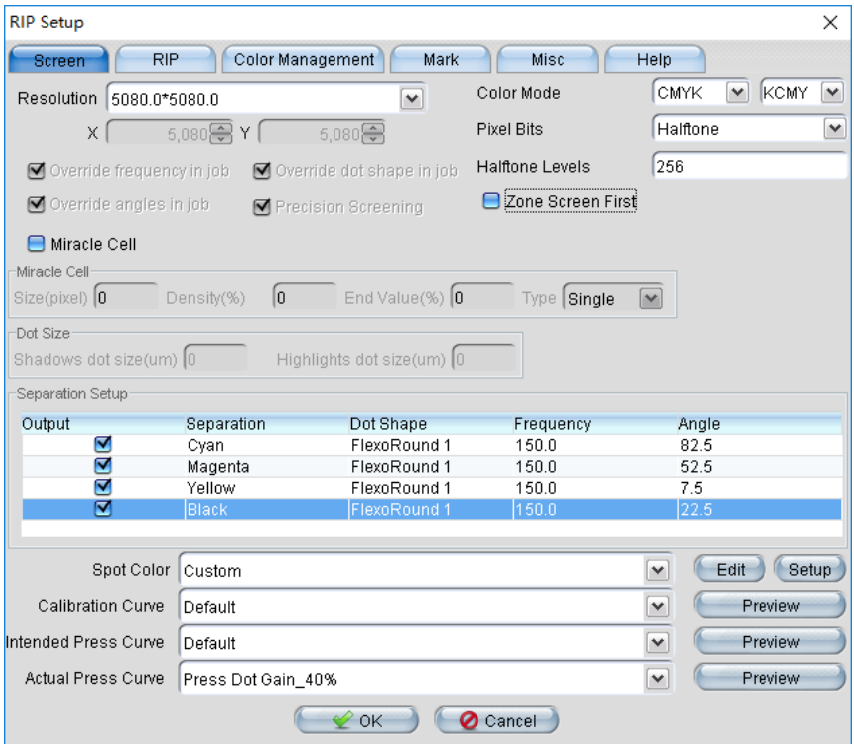
- Then select this curve in Intended Press Curve options while processing jobs, as following:



For dot gain while printing on press machine, if 50% on plate and its result on printing material is 70% after printing, so input 70 on the blank area of 50%, as following:



And then select this dot gain curve from Actual Press Curve options:



the end

